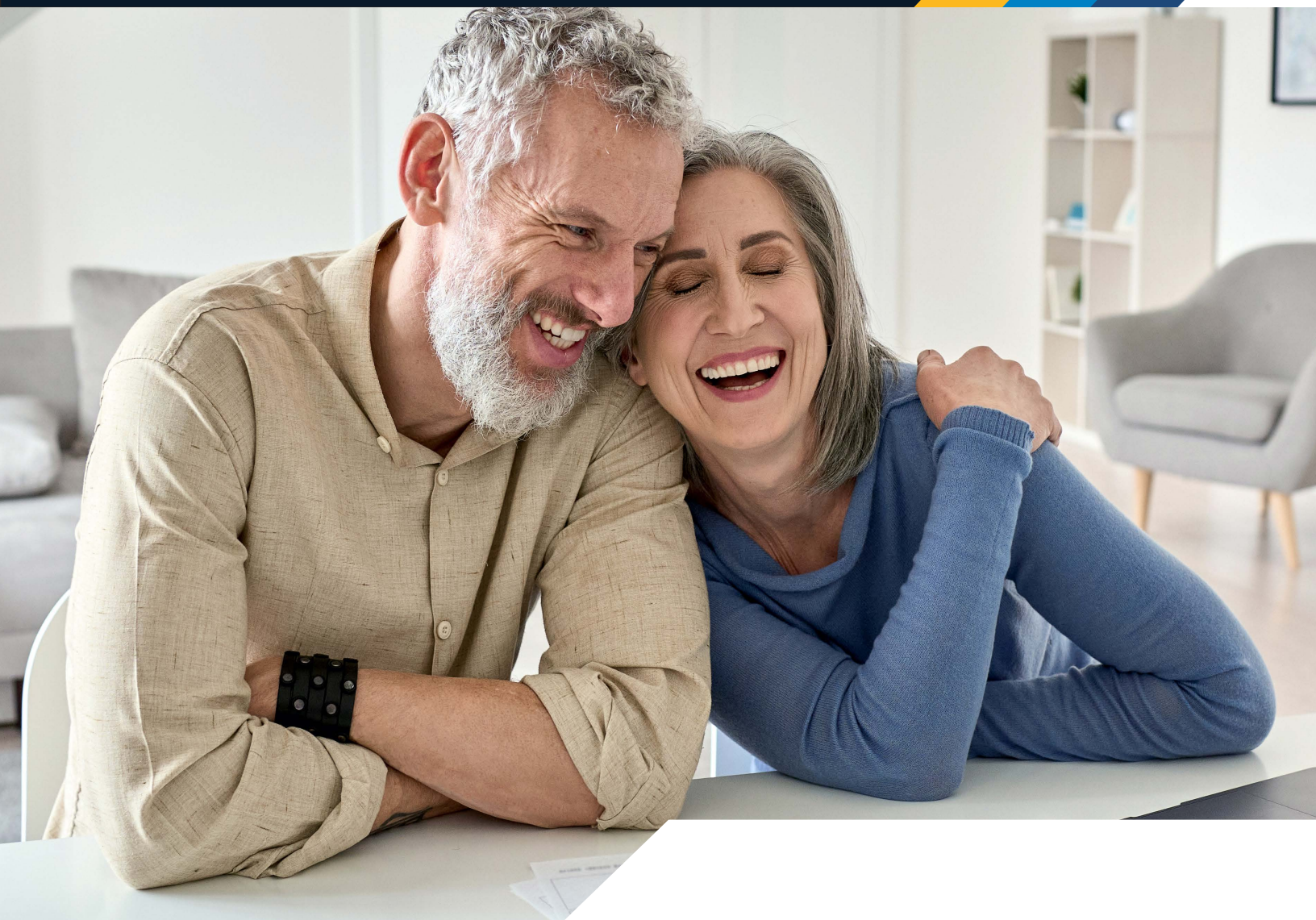


# Strategy Index 7

ANICO Strategy Indexed Annuity PLUS 7



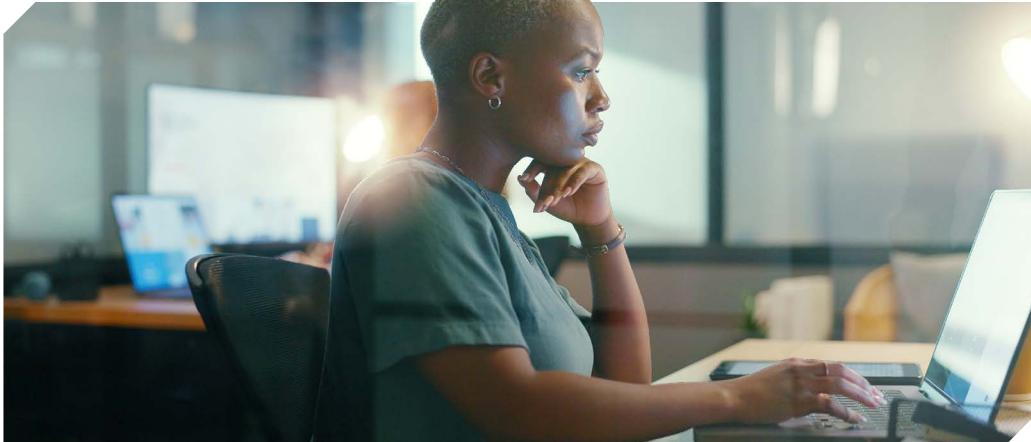
**AMERICAN NATIONAL** 

AMERICAN NATIONAL INSURANCE COMPANY

# Unlock the Power of Annuities for a Secure Future.

ANICO Strategy Indexed Annuity Plus 7 (Strategy Index 7) offers a low-risk option with the flexibility to choose from three top-rated indices, providing a secure way to protect your money.

With the added benefit of an optional lifetime income rider that guarantees a lifelong income stream (regardless of annuity value) Strategy Index 7 can help ensure a worry-free future for individuals approaching or in retirement.



# Flexible Premium Fixed Deferred Indexed Annuity

## Flexible Premium

A flexible premium in an annuity allows the owner to make premium payments in varying amounts and at different times, within set limits. This provides flexibility to contribute additional funds, manage savings, and potentially increase the annuity's value.

### PREMIUM ENHANCEMENT

Premium enhancements are applied to all payments made within the first three years of the contract. This offering and its amount are subject to change at any time. Please refer to our current rate sheet for the latest details.

## Fixed Deferred

The term "fixed deferred" refers to the way the annuity accumulates value over time. In a fixed deferred annuity, the growth of the annuity's value is based on

a fixed interest rate that is predetermined and guaranteed.

The growth is deferred, meaning it occurs over a specified period of time, typically until the annuity is annuitized or converted into a stream of income payments.

## Indexed Annuity

Indexed annuities are annuities that can provide higher returns based on the performance of a specific financial index, such as the S&P 500®. With indexed annuities, individuals can participate in market gains while also having downside protection. These annuities usually have a minimum guaranteed interest rate to safeguard against a decrease in value, even if the chosen index performs poorly.

# ▶ Strategy Index 7

## Key Features

Lifetime income, liquidity, and growth potential.



### **Upside Interest Potential**

The annuity offers four indexed crediting options that provide the opportunity for potential interest growth.



### **Minimum Guarantee**

Even in the event of a market decline, the policy's principal amount is protected by a minimum guarantee.



### **Lifetime Income Rider**

This optional feature ensures that the insured receives a guaranteed income for the remainder of their life, providing financial security during retirement.



### **Guaranteed Minimum Surrender Value**

If the insured decides to voluntarily terminate the policy, the Guaranteed Minimum Surrender Value provides a predetermined value based on the premiums paid.

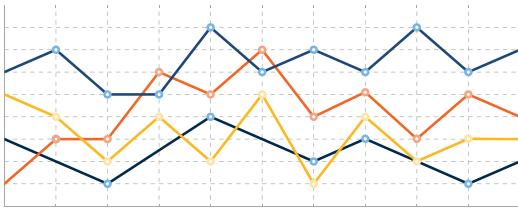


### **Liquidity Option**

In the face of sudden and unforeseen events that one cannot prepare for, this option allows for quick access to funds.

# ▶ Market Index Interest-Crediting

The interest rate is based on a specific market index performance.



Market index interest-crediting, also known as indexing, is a method used by indexed annuities to calculate the interest rate credited to the contract, which is based on the performance of a specific market index.

The interest rate credited is typically linked to the returns of a chosen market index, such as the S&P 500® or another benchmark index.

**The key principle of indexing is that no money is directly invested in the underlying index, the stock market, or any equity.**

Instead, the movements of the index from one period to another are tracked and used as the basis for crediting interest.

## If Index Increases

There is the potential to have a higher amount of interest credited to an indexed strategy than would be credited to the fixed account.

The **crediting cap** is the maximum growth or limit that can be credited to a financial product or investment.

## If Index Decreases

The interest credited will never go below 0%.<sup>1</sup>

This **crediting floor** is the minimum rate that may be credited to the account, as stated on the company rate sheet for that month. It protects against losses in market downturns or unfavorable economic conditions.

## Point-to-Point Index Measuring

Point-to-Point refers to a change in an index directly from one point in time to another point in time.

# ► Strategy Index 7 Crediting Strategies

Choose from a range of crediting strategies with three top-rated indices.

With Strategy Index 7 you have the freedom to allocate your funds in a single strategy or participate in all five strategies, empowering you to meet your unique goals.

As your plans evolve, Strategy Index 7 allows you to allocate future premiums and existing funds to different strategies, providing the flexibility you need to stay on track.

There is no minimum allocation amount, giving you the flexibility to allocate your funds according to your preferences.

## Three Top-Rated Indices

Recognizing that everyone's financial journey is unique, we offer you the versatility to choose from three top-rated indices ensuring your investment plan aligns with your lifestyle:

- S&P 500® Index
- S&P MARC 5% Index
- Nasdaq-100 Index®



# S&P 500® Index

The S&P 500® is a capitalization weighted index that tracks the performance of 500 large companies listed on US stock exchanges. The S&P 500® is widely regarded as the best single gauge of large-cap US equities. There is over USD 11.2 trillion indexed or benchmarked to the index, with indexed assets comprising approximately USD 4.6 trillion of this total.

The index includes 500 leading companies and covers approximately 80% of available market capitalization. The companies that are tracked are selected by committee and must meet certain criteria before making the list of eligible companies.<sup>2</sup>

## STRATEGY

### ► S&P 500® Value Cap

#### S&P 500® Index Point-to-Point with Cap

The credited rate will be determined by the annual growth rate of the point-to-point index ranging from 0% to a declared cap. It is subject to a floor of 0%.

#### Hypothetical Examples<sup>3</sup>

- 100% participation rate × 6% annual growth rate = 6%  
= **5% crediting rate** (6% subject to 5% cap)
- any participation rate × -10% annual growth rate  
= **0% crediting rate** (with 0% floor will never fall below 0%)<sup>1</sup>

## STRATEGY

### ► S&P 500® Uncapped

#### S&P 500® Index Point-to-Point Uncapped

The point-to-point uncapped performance strategy allows for a one year segment term with a participation rate and no cap. It is subject to a floor of 0%.

#### Hypothetical Examples<sup>3</sup>

- 30% participation rate × 10% annual growth rate  
= **3% crediting rate**
- any participation rate × -10% annual growth rate  
= **0% crediting rate** (with 0% floor will never fall below 0%)<sup>1</sup>

# S&P MARC 5% Excess Return Index

(S&P MARC 5% Index)

The S&P MARC 5% Index is a derivative index of the S&P 500<sup>®</sup> designed to manage market volatility. The S&P MARC 5% (Multi-Asset Risk Control) Index seeks to provide multi-asset diversification within a simple risk weighting framework, tracking three underlying component indices that represent equities, commodities, and fixed income.

For purposes of the S&P MARC 5% Index, an excess return version of the S&P 500<sup>®</sup> is calculated from the S&P 500<sup>®</sup> Total Return Index and is used as the underlying equities component index. The weighted strategy is rebalanced daily to maintain a target volatility of 5%. In low-volatility environments, the S&P MARC 5% Index risk control mechanism increases market exposure to riskier assets by increasing the allocation to the index (up to a leveraged position of 150%).

## STRATEGY

### ► S&P MARC 5% Low Volatility

#### S&P MARC 5% Index Point-to-Point Uncapped

The crediting rate in this uncapped strategy is determined based on the annual change in the S&P MARC 5% and multiplied by a declared participation rate. The S&P MARC 5% is a derivative of the more well-known S&P 500<sup>®</sup> that is rebalanced daily to manage market volatility.

#### Hypothetical Examples<sup>3</sup>

- 120% participation rate × 5% annual growth rate  
= **6% crediting rate**
- any participation rate × -10% annual growth rate  
= **0% crediting rate** (with 0% floor will never fall below 0%)<sup>1</sup>

# Nasdaq-100 Index®

The Nasdaq-100 Index® is a modified market capitalization weighted index that tracks the performance of 100 of the largest domestic and international non-financial companies listed on The Nasdaq Stock Market® based on market capitalization.

The index reflects companies across major industry groups including computer hardware and software, telecommunications, retail/wholesale trade and biotechnology. It does not contain securities of financial companies including investment companies. The companies selected are based on an annual ranking of all eligible companies listed on The Nasdaq Stock Market®. The value for this index is published multiple times a day and includes an opening market value and a closing market value.

## STRATEGY

### ► Nasdaq-100® Growth Cap

#### Nasdaq-100 Index® Point-to-Point with Cap

The Growth Cap strategy crediting rate is determined based on the annual change in the Nasdaq-100® Index.

#### Hypothetical Examples<sup>3</sup>

- 100% participation rate × 6% annual growth rate = 6%  
= **5% crediting rate** (6% subject to 5% cap)
- any participation rate × -10% annual growth rate  
= **0% crediting rate** (with 0% floor will never fall below 0%)<sup>1</sup>

## Fixed Option

A fixed rate provides predictability and protection, offering stability and reassurance even during times of economic uncertainty.

## STRATEGY

### ► Declared Rate

#### Declared Rate

The interest rate is set at the beginning of each segment term so you know the return you will receive on the premium placed in the declared rate strategy.<sup>4</sup>

## ▶ Historical Performance

This table illustrates how the specific indexed interest crediting strategies would have performed using actual historical performance of the S&P MARC 5% Excess Return, Nasdaq-100®, and S&P 500® indices for the 20-year period from 2005 to 2024 had the annuity been available; assuming a contract issue date of 01/01/2005.

Year	S&P MARC 5%*		Nasdaq-100®		S&P 500®		
	Index Return	Par 200%	Index Return	Cap 9.50%	Index Return	Uncapped Par 45%	Par 100% Cap 9.50%
2005	2.93%	5.86%	1.49%	1.49%	3.84%	1.73%	3.84%
2006	4.69%	9.38%	6.79%	6.79%	13.62%	6.13%	9.50%
2007	8.40%	16.79%	18.67%	9.50%	3.53%	1.59%	3.53%
2008	1.07%	2.14%	-41.89%	0.00%	-38.49%	0.00%	0.00%
2009	6.91%	13.83%	53.54%	9.50%	23.45%	10.55%	9.50%
2010	13.17%	26.35%	19.22%	9.50%	12.78%	5.75%	9.50%
2011	11.18%	22.37%	2.70%	2.70%	0.00%	0.00%	0.00%
2012	5.95%	11.90%	16.82%	9.50%	13.41%	6.03%	9.50%
2013	-3.08%	0.00%	34.99%	9.50%	29.60%	13.32%	9.50%
2014	6.48%	12.97%	17.94%	9.50%	11.39%	5.13%	9.50%
2015	-2.92%	0.00%	8.43%	8.43%	-0.73%	0.00%	0.00%
2016	4.32%	8.64%	5.89%	5.89%	9.54%	4.29%	9.50%
2017	10.71%	21.42%	31.52%	9.50%	19.42%	8.74%	9.50%
2018	-3.30%	0.00%	-1.04%	0.00%	-6.24%	0.00%	0.00%
2019	13.70%	27.40%	37.96%	9.50%	28.88%	13.00%	9.50%
2020	8.28%	16.57%	47.58%	9.50%	16.26%	7.32%	9.50%
2021	0.28%	0.56%	26.63%	9.50%	24.52%	11.04%	9.50%
2022	-9.20%	0.00%	-32.97%	0.00%	-17.91%	0.00%	0.00%
2023	3.46%	6.92%	53.81%	9.50%	24.23%	10.90%	9.50%
2024	3.87%	7.74%	24.88%	9.50%	23.31%	10.49%	9.50%
<b>Avg.</b>	<b>4.35%</b>	<b>10.54%</b>	<b>16.65%</b>	<b>6.96%</b>	<b>9.72%</b>	<b>6.70%</b>	<b>6.54%</b>

All information for an index prior to its launch date is hypothetical back-tested, not actual performance, based on the index methodology in effect on the launch date. Back-tested performance reflects application of an index methodology and selection of index constituents with the benefit of hindsight and knowledge of factors that may have positively affected its performance, cannot account for all financial risk that may affect results and may be considered to reflect survivor/look ahead bias. Actual returns may differ significantly from, and be lower than, back-tested returns. Past performance is not an indication or guarantee of future results.



## ▶ Lifetime Income Rider

### An income stream guaranteed for life

As life expectancy increases, retirement periods are getting longer. With Strategy Index 7, you have the option to add a Lifetime Income Rider (LIR) at the start of your contract. The LIR provides a guaranteed income stream for life, even if the annuity value drops to zero.<sup>5</sup>

#### **There are two LIR options available:**

##### **Fixed Rate**

A fixed rate is determined at the beginning of the contract and remains unchanged throughout. The LIR interest is calculated annually and credited daily for the first 10 years or until LIR income payments start, whichever comes first.

Additional premiums paid during the contract period will increase the total income base but won't earn interest.

##### **Fixed Rate + Indexed Credit**

Similar to the Fixed Rate LIR, this option allows the LIR interest to be credited for the first 10 years or until LIR income payments start, whichever comes first.

However, in addition to the fixed interest rate, this option will also earn additional interest based on the premium that is allocated to the index crediting strategies. Earning both a fixed interest rate and index credits.

Additional premiums paid during the contract period will increase the total income base but won't earn interest.

### Income Base

The income base is maintained separately from the annuity value and is used to determine your income payments. This value accumulates interest annually up to 10 years or until you elect to begin income payments, whichever comes first.

You decide at issue whether the income base will accumulate using the fixed rate lifetime income rider, or the fixed rate + index credit option.

When you begin receiving income payments, the income base amount will be equal to the higher of either the contract's annuity value on the date income payments begin or the income base.

### Income for Life

The income payment is an amount determined by multiplying the income percentage times either the income base or the annuity value (whichever is higher). The amount of your income payments will be the same every year and will depend on your age on the date that payments begin.

Income payments can begin when both of the following have been met:

1. The contract has been in force for more than one year.
2. The contract owner is age 50+ (age of youngest owner if joint).

Note: Joint Owners must be spouses at the time the lifetime income rider is elected.

## Lifetime Income Percentage by Age

Single life age when income begins							
50	3.5%	61	4.6%	72	5.7%	83	6.8%
51	3.6%	62	4.7%	73	5.8%	84	6.9%
52	3.7%	63	4.8%	74	5.9%	85	7.0%
53	3.8%	64	4.9%	75	6.0%	86	7.1%
54	3.9%	65	5.0%	76	6.1%	87	7.2%
55	4.0%	66	5.1%	77	6.2%	88	7.3%
56	4.1%	67	5.2%	78	6.3%	89	7.4%
57	4.2%	68	5.3%	79	6.4%	90	7.5%
58	4.3%	69	5.4%	80	6.5%		
59	4.4%	70	5.5%	81	6.6%		
60	4.5%	71	5.6%	82	6.7%		

Joint life age when income begins							
50	3.0%	61	4.1%	72	5.2%	83	6.3%
51	3.1%	62	4.2%	73	5.3%	84	6.4%
52	3.2%	63	4.3%	74	5.4%	85	6.5%
53	3.3%	64	4.4%	75	5.5%	86	6.6%
54	3.4%	65	4.5%	76	5.6%	87	6.7%
55	3.5%	66	4.6%	77	5.7%	88	6.8%
56	3.6%	67	4.7%	78	5.8%	89	6.9%
57	3.7%	68	4.8%	79	5.9%	90	7.0%
58	3.8%	69	4.9%	80	6.0%		
59	3.9%	70	5.0%	81	6.1%		
60	4.0%	71	5.1%	82	6.2%		

## Fixed Rate Hypothetical Example<sup>3</sup>

Initial Premium = \$100,000 Assumed LIR Growth Rate = 6.85%

Contract Year	Age	LIR Growth	Income Base	Withdrawal Factor	Available Annual LIR Income
1	51	6.85%	\$106,850	3.60%	\$3,847
2	52	6.85%	\$114,169	3.70%	\$4,224
3	53	6.85%	\$121,990	3.80%	\$4,636
4	54	6.85%	\$130,346	3.90%	\$5,083
5	55	6.85%	\$139,275	4.00%	\$5,571
6	56	6.85%	\$148,815	4.10%	\$6,101
7	57	6.85%	\$159,009	4.20%	\$6,678
8	58	6.85%	\$169,901	4.30%	\$7,306
9	59	6.85%	\$181,539	4.40%	\$7,988
10	60	6.85%	\$193,975	4.50%	\$8,729
11	61	0.00%	\$193,975	4.60%	\$8,923
12	62	0.00%	\$193,975	4.70%	\$9,117
13	63	0.00%	\$193,975	4.80%	\$9,311
14	64	0.00%	\$193,975	4.90%	\$9,505
15	65	0.00%	\$193,975	5.00%	\$9,699
16	66	0.00%	\$193,975	5.10%	\$9,893
17	67	0.00%	\$193,975	5.20%	\$10,087
18	68	0.00%	\$193,975	5.30%	\$10,281
19	69	0.00%	\$193,975	5.40%	\$10,475
20	70	0.00%	\$193,975	5.50%	\$10,669
21	71	0.00%	\$193,975	5.60%	\$10,863
22	72	0.00%	\$193,975	5.70%	\$11,057
23	73	0.00%	\$193,975	5.80%	\$11,251
24	74	0.00%	\$193,975	5.90%	\$11,445
25	75	0.00%	\$193,975	6.00%	\$11,638
26	76	0.00%	\$193,975	6.10%	\$11,832
27	77	0.00%	\$193,975	6.20%	\$12,026
28	78	0.00%	\$193,975	6.30%	\$12,220
29	79	0.00%	\$193,975	6.40%	\$12,414
30	80	0.00%	\$193,975	6.50%	\$12,608

In the example above, we assume that during the first 10 years of the contract, the income base will be credited 6.85% annually compounded credited daily.

Please note that when the owner chooses to begin receiving income payments, the annual income amount is calculated based on the balance of either the annuity value or income base (whichever is higher).

For the life of the owner, the annual income will remain the same, even if the annuity value drops to zero (assuming no excess withdrawals).

## Fixed Rate + Index Credit Hypothetical Example<sup>3</sup>

Initial Premium = \$100,000 Assumed LIR Growth Rate = 3.85%

Contract Year	Age	LIR Growth		Total	Income Base	Withdrawal Factor	Available Annual LIR Income
		Fixed	Index				
1	51	3.85%	6.40%	10.25%	\$110,250	3.60%	\$3,969.00
2	52	3.85%	6.40%	10.25%	\$121,551	3.70%	\$4,497.37
3	53	3.85%	6.40%	10.25%	\$134,010	3.80%	\$5,092.36
4	54	3.85%	0.00%	3.85%	\$139,169	3.90%	\$5,427.59
5	55	3.85%	6.40%	10.25%	\$153,434	4.00%	\$6,137.35
6	56	3.85%	6.40%	10.25%	\$169,161	4.10%	\$6,935.59
7	57	3.85%	0.00%	3.85%	\$175,673	4.20%	\$7,378.28
8	58	3.85%	6.40%	10.25%	\$193,680	4.30%	\$8,328.24
9	59	3.85%	6.40%	10.25%	\$213,532	4.40%	\$9,395.41
10	60	3.85%	6.40%	10.25%	\$235,419	4.50%	\$10,593.86
11	61	0.00%	0.00%	0.00%	\$235,419	4.60%	\$10,829.28
12	62	0.00%	0.00%	0.00%	\$235,419	4.70%	\$11,064.70
13	63	0.00%	0.00%	0.00%	\$235,419	4.80%	\$11,300.12
14	64	0.00%	0.00%	0.00%	\$235,419	4.90%	\$11,535.54
15	65	0.00%	0.00%	0.00%	\$235,419	5.00%	\$11,770.96
16	66	0.00%	0.00%	0.00%	\$235,419	5.10%	\$12,006.38
17	67	0.00%	0.00%	0.00%	\$235,419	5.20%	\$12,241.80
18	68	0.00%	0.00%	0.00%	\$235,419	5.30%	\$12,477.21
19	69	0.00%	0.00%	0.00%	\$235,419	5.40%	\$12,712.63
20	70	0.00%	0.00%	0.00%	\$235,419	5.50%	\$12,948.05
21	71	0.00%	0.00%	0.00%	\$235,419	5.60%	\$13,183.47
22	72	0.00%	0.00%	0.00%	\$235,419	5.70%	\$13,418.89
23	73	0.00%	0.00%	0.00%	\$235,419	5.80%	\$13,654.31
24	74	0.00%	0.00%	0.00%	\$235,419	5.90%	\$13,889.73
25	75	0.00%	0.00%	0.00%	\$235,419	6.00%	\$14,125.15
26	76	0.00%	0.00%	0.00%	\$235,419	6.10%	\$14,360.57
27	77	0.00%	0.00%	0.00%	\$235,419	6.20%	\$14,595.99
28	78	0.00%	0.00%	0.00%	\$235,419	6.30%	\$14,831.41
29	79	0.00%	0.00%	0.00%	\$235,419	6.40%	\$15,066.83
30	80	0.00%	0.00%	0.00%	\$235,419	6.50%	\$15,302.24

In the example above, we assume that during the first 10 years of the contract, the income base will be credited 3.85% annually compounded credited daily.

Please note that the index credit rate is equal to your index credits earned in the previous year divided by the total amount of your premium allocated to indexed crediting.

The example then shows how the index credit rate will be applied and credited annually. The index credit will continue to credit the income base for 10 years or once income withdrawals begin.

## ► Strategy Index 7 Overview

<b>Issue Ages</b>	0–80 (owner and annuitant; age last birthday)																		
<b>Maturity Age</b>	100 (annuitant)																		
<b>Premium</b>	Flexible Premium																		
<b>Initial Minimum Premium</b>	Q \$5,000 NQ \$10,000																		
<b>Minimum Subsequent Premium</b>	\$100 monthly with EFT (\$300 quarterly, \$600 semi-annually, \$1,200 annual, \$1,000 for non-EFT.)																		
<b>Important Terms</b>	<ul style="list-style-type: none"> <li>• Participation Rate: The portion of the change in the Index credited to the contract.</li> <li>• Cap: The maximum interest credited to an indexed strategy.</li> <li>• Index: S&amp;P 500®, S&amp;P MARC 5%, and Nasdaq-100®.</li> <li>• Annuity Value: The total amount of net annuity premium, plus credited interest, less any partial and or systematic withdrawal and associated surrender charges and Market Value Adjustment (MVA), less rider charges.</li> </ul>																		
<b>Interest Crediting Strategies</b>	<ul style="list-style-type: none"> <li style="width: 50%;">• S&amp;P 500® Uncapped</li> <li style="width: 50%;">• Nasdaq-100® Growth Cap</li> <li style="width: 50%;">• S&amp;P 500® Value Cap</li> <li style="width: 50%;">• Declared Rate</li> <li style="width: 50%;">• S&amp;P MARC 5% Low Volatility</li> </ul>																		
<b>Income Rider</b>	An optional lifetime income rider is available with two crediting options (1) Fixed rate or (2) Fixed rate PLUS index credit. There is a fee for these riders. Check with your agent.																		
<b>Minimum Guaranteed Surrender Value</b>	87.5% of premium, accumulated at the minimum guaranteed rates required by law for the indexed account and the declared rate account, less any withdrawals. There are separate minimum guaranteed rates for the indexed and declared rate accounts. These rates will be set at issue and guaranteed for the life of the contract.																		
<b>Surrender Value</b>	The surrender value is equal to the annuity value (1) minus any applicable surrender charge, (2) minus any applicable premium taxes, and (3) with any applicable MVA. MVA could be positive or negative.																		
<b>Surrender Charge Free Withdrawal Privilege</b>	After the contract is issued, you can withdraw up to 10% of your annuity value as of the beginning of each Contract Year. The minimum withdrawal is \$250.																		
<b>Surrender Charges</b>	<p>Withdrawals taken in excess of the surrender charge free withdrawal amount will be subject to the following surrender charge schedule:</p> <table border="1" style="width: 100%; border-collapse: collapse; text-align: center;"> <thead> <tr> <th style="text-align: left;">Contract Year</th> <th>1</th> <th>2</th> <th>3</th> <th>4</th> <th>5</th> <th>6</th> <th>7</th> <th>8+</th> </tr> </thead> <tbody> <tr> <td style="text-align: left;">Surrender Charge</td> <td>7%</td> <td>6%</td> <td>5%</td> <td>4%</td> <td>3%</td> <td>2%</td> <td>1%</td> <td>0%</td> </tr> </tbody> </table>	Contract Year	1	2	3	4	5	6	7	8+	Surrender Charge	7%	6%	5%	4%	3%	2%	1%	0%
Contract Year	1	2	3	4	5	6	7	8+											
Surrender Charge	7%	6%	5%	4%	3%	2%	1%	0%											
<b>Surrender Charge Free Waivers</b>	Confinement, disability, and terminal illness. Please see contract for specific details.																		
<b>Market Value Adjustments (MVA)</b>	If you withdraw any amount during the surrender charge period in excess of the allotted 10% surrender charge free withdrawal amount, additional adjustments may be applied that could increase or decrease the total withdrawal amount. Values are determined by comparing market interest rates on the contract's issue date to its surrender date. Not applicable in all states.																		
<b>Death Benefit</b>	At the death of the owner, the greater of the annuity value or surrender value will be paid.																		

Premium Enhancement Recapture Rate by Contract Year								
Surrender Charge Period	1	2	3	4	5	6	7	8
7-Year	100%	90%	80%	70%	55%	40%	20%	0%

This brochure is not available for use in Oregon.

The table on page 10 is intended solely for illustrative purposes and is not an indication of the indexed interest crediting strategies future performance. Past performance of the index is no guarantee of future results. The S&P 500® Index does not reflect dividends paid on the stocks underlying the index. These charts assume a 2.15% cap for the monthly sum strategy, a 5.40% cap for the point-to-point strategy with 100% participation and a 25% participation for the uncapped strategy for the entire 20-year period. An interest rate of 1.90% is assumed for the declared rate strategy and 3.40% for the specified rate strategy for the 20-year period. Interest rates, rate caps and participation amounts are likely to vary from year to year. The use of alternative assumptions would produce significantly different results.

1) However, the accumulation value may decrease due to monthly deductions and other policy costs. 2) The S&P 500® or Standard & Poor's 500 index is a market-capitalization-weighted index of the 500 largest U.S. publicly traded companies. 3) All hypothetical examples are provided for illustrative purposes only. 4) The declared rate strategy and sweep account credits fixed interest daily. The indexed strategies credit interest based on the performance of the declared index, and their formula used to determine indexed earnings. 5) See your agent for current rate and period. Your Income Base will earn interest set by the contract number of years or until you elect to begin income, whichever comes first.

The S&P MARC 5% Index and the S&P 500® Index are products of S&P Dow Jones Indices LLC or its affiliates ("SPDJ") and have been licensed for use by American National Insurance Company. S&P®, S&P 500®, US 500, The 500, iBoxx®, iTraxx® and CDX® are trademarks of S&P Global, Inc. or its affiliates ("S&P"); Dow Jones® is a registered trademark of Dow Jones Trademark Holdings LLC ("Dow Jones") and these trademarks have been licensed for use by SPDJI and sub-licensed for certain purposes by American National Insurance Company. American National Insurance Company's products are not sponsored, endorsed, sold or promoted by SPDJI, Dow Jones, S&P, their respective affiliates, and none of such parties make any representation regarding the advisability of investing in such product(s) nor do they have any liability for any errors, omissions, or interruptions of the S&P MARC 5% Index and the S&P 500® Index.

Nasdaq® and the Nasdaq-100 Index® are registered trademarks of Nasdaq, Inc. (which with its affiliates is referred to as the "Corporations") and are licensed for use by American National Insurance Company. The Product(s) have not been passed on by the Corporations as to their legality or suitability. The Product(s) are not issued, endorsed, sold, or promoted by the Corporations. **THE CORPORATIONS MAKE NO WARRANTIES AND BEAR NO LIABILITY WITH RESPECT TO THE PRODUCT(S).**

Guarantees are based on the claims paying ability of American National Insurance Company, Form Series FPIA24; LIR24 (Forms may vary by state, Idaho forms ICC24 Form FPIA24 and ICC24 Form LIR24) (ICC23 Form WSR23-CT and ICC23 Form WSR23-D). American National Insurance Company, Galveston, Texas.

American National is a group of companies writing a broad array of insurance products and services and operating in all 50 states. American National Insurance Company was founded in 1905 and is headquartered in Galveston, Texas. Life insurance, annuities, pension products, and other products and services are written through multiple companies. Property and casualty insurance is written through American National Property And Casualty Company, Springfield, Missouri, and affiliates. In New York, business is written through Farm Family Casualty Insurance Company, United Farm Family Insurance Company, and American National Life Insurance Company of New York, Glenmont, New York. Not all products and services are available in all states. Not all companies are licensed in all states. Each company has financial responsibility for only the products and services it issues. For more information, please visit AmericanNational.com.



**AMERICAN NATIONAL INSURANCE COMPANY**